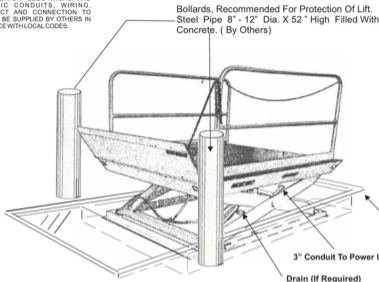
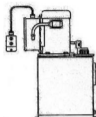


ELECTRICAL DETAILS - All INTERIOR AND EXTERIOR ELECTRICAL AND HYDRAULIC CONDUITS, WIRING, DISCONNECT AND CONNECTION TO POWER TO BE SUPPLIED BY OTHERS IN COMPLIANCE WITH LOCAL CODES.



Power Unit Mounted On Reservoir For Size Of Power Pak See Table Below. Unit Floor Mounted, NEMA 4 Control Station, Constant Pressure Type With 'Up' And 'Down' Buttons On 12" Straight Electrical Cord. Control Components Are Installed In NEMA 12 Rate Enclosure, Pre-wired And Dielectric Tested.



Power Unit Maximum Of 35'0" Away From Lift

STANDARD POWER PACK DIMENSION	3 HP	5 HP	7.5 HP	10 HP
Length	18"	25"	25"	25"
Width	15"	20"	20"	29"
Height	29"	36 1/2"	36 1/2"	31"
Shipping Weight	175 lb	355 lb	405 lb	460 lb

Note: 3 HP available for 4,000 - 6,000 lb capacity models only

Curb Angles (By Others Or Blue Giant)

CURB ANGLE ANCHOR LAYOUT



(1/4" MIN)



CONCRETE ANCHORS - NELSON STUDS, 1/2" DIA, 6" LONG, LOCATED AS SHOWN

Note: For Floor Mounted Installation (Not Shown), Concrete Pad To Be Minimum 6" Wider and 6" Longer Than Dock Lift, And Concrete Pad To Be 8" - 10" Thick With Embedded Rebar, By Others And In Compliance With Local Codes.

WORK BY OTHERS

1. Reinforce Concrete To Suit Site Soil Requirements
2. One (1) Electric Disconnect For 3 HP to 10 HP Power Unit
3. All Construction Of Pit And Materials Shown (Bollards, Curb Angles, 3" Conduit To Pit, Drain Etc.)
4. One (1) 3" Conduit From Dock Lift Pit To Power Unit Location Critical - 3" Conduit Must Have Minimum 1/4" Radius At Bends
5. One (1) 1" Minimum Conduit Required For Optional:
 - Electric Trip Bars
 - Up Travel Limit Switch
 - Down Travel Limit Switch
 - Push Button w/Disconnect Weather Proof Box and Twist Lock Plug On 4' Cord (Mounted On Post At 'C' & 'D')
6. Optional Hydraulic Lip Requires An Additional 3" Conduit

- i. Pull Optional Electrical Wiring, As Noted In #5 Work By Others, Thru 1" Conduit From Power Unit, Make Proper Connections
- ii. Pull Hydraulic Hose Thru 3" Conduit From Power Unit, Make Proper Connections
- iii. Shim Dock Lift As Required Provide Concrete Anchor Bolts For Installing
- iv. Make Adjustments To Unit For Proper Operation
- v. Demonstrate Operation And Maintenance Of Dock Lift To Customer



Please Return All Submittal Approvals To Blue Giant Stamped/Signed And Dated

Initial Date / /