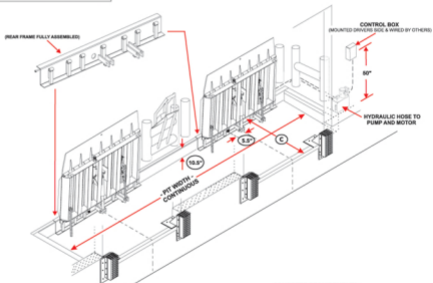


**IMPORTANT:**

REAR FRAME SUPPLIED PRIOR TO SHIPMENT OF VERTICAL DOCK LEVELER FOR EMBEDMENT INTO CONCRETE WHEN FORMING PIT (INSTALLED BY OTHERS)



**CONCRETE REQUIREMENTS:**

- MINIMUM CONCRETE STRENGTH 3,000 PSI
- CONCRETE TO BE WELL COMPACTED (VIBRATED)
- CONCRETE THICKNESS DETERMINED BY PROJECT ENGINEER