

Spring loaded side panels retract to minimize damage



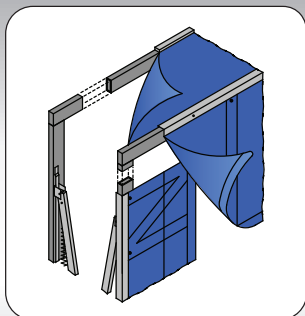
Designed for door openings up to 10' wide x 10' high (3048 mm x 3048 mm) or larger, the RS-501 is designed to retract upon impact. The RS-501's collapsible scissor arms are spring loaded, keeping the shelter in a projected position. When compressed by an incoming trailer the panels create

an air tight seal. The RS-501 is very effective where the driveway approach is not level. The RS-501 creates a tight seal that blocks out foul weather, insects, dust and dirt, while saving money on energy costs. A large selection of tough abrasion resistant fabrics makes this unit an excellent long lasting investment.

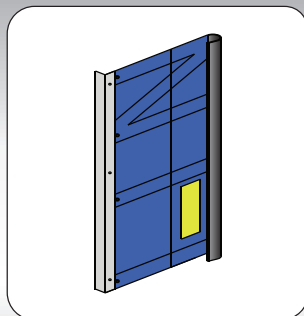


- RS-501 standard dimensions for door openings 10' wide x 10' high (3048 mm x 3048 mm) are 11'6" wide x 11' high (3505 mm x 3353 mm) (O.D.) x 24" (610 mm) projection with 21" (533 mm) wide vertical panels and a 36" (914 mm) drop header panel.
- Seals trailers from 11'6" to 13'6" (3505 mm x 4115 mm) high from grade with a dock height of 48" (1219 mm). Also seals trailers with widths from 8' (2438 mm) wide.
- A larger selection of cover fabrics are available.
- Can be designed to suit a large variety of oversized door openings, heights, widths and/or dock projections.
- 18"-20" (457 mm-508 mm) projection in front of the dock bumper face is recommended to provide a proper seal.

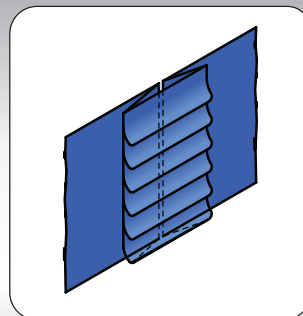
OPTIONS



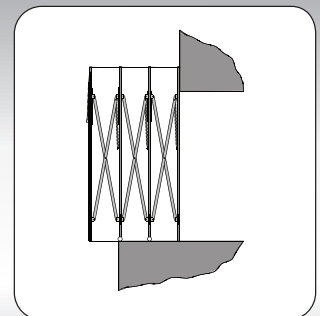
A. Steel protective guards
(Recommended)



B. Bottom draft pads
(Recommended)

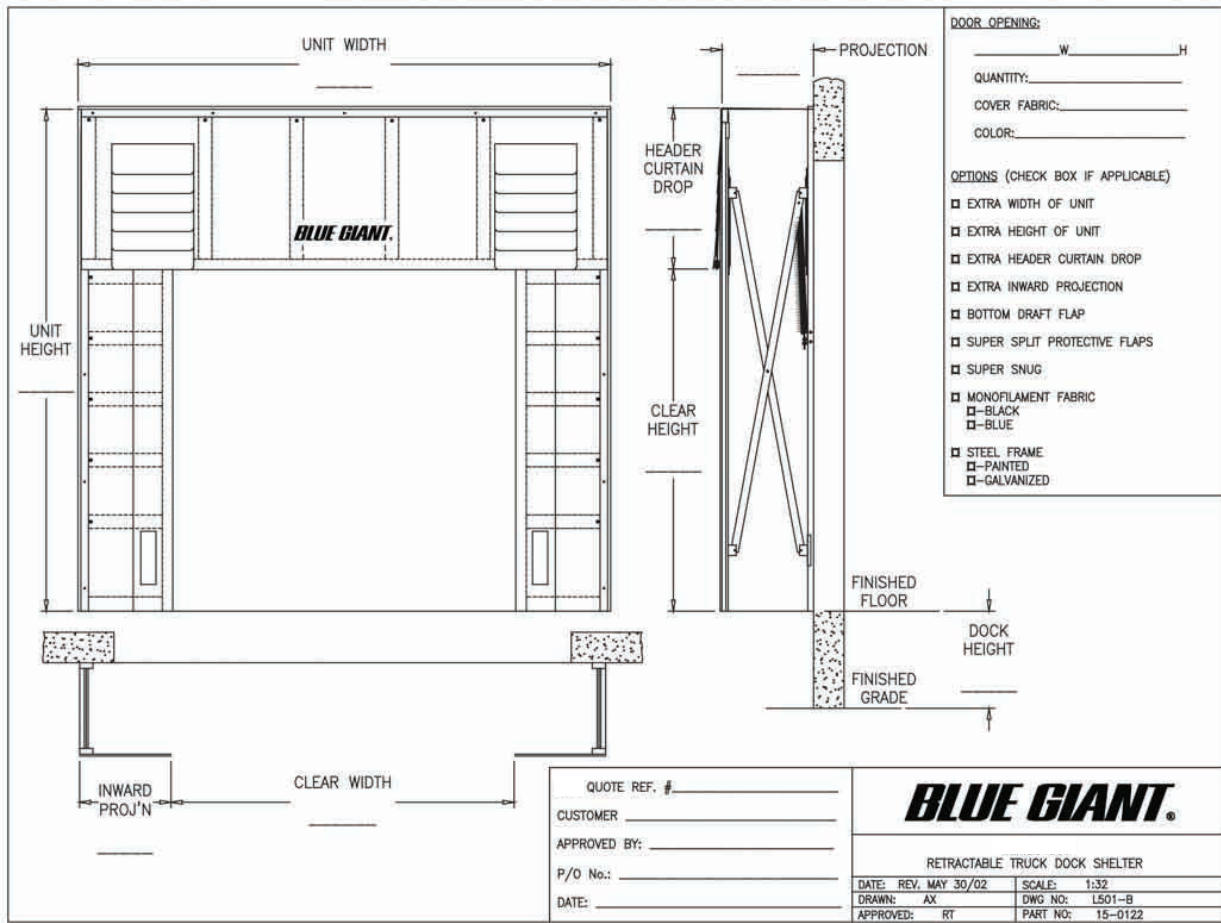


C. Super Split Curtain



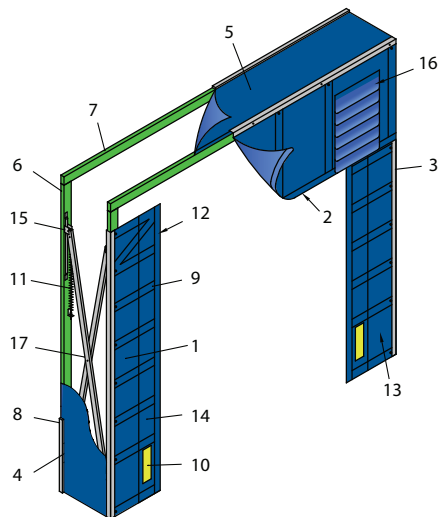
D. Super Snug

Specifications



Retractable truck dock shelter(s) to be Series RS501 as manufactured by Blue Giant Brampton, Ontario, Canada Retractable truck dock shelter(s) to be manufactured to fit door opening size(s) _____ ft./mm wide x _____ ft./mm high.

1. Vertical panels
2. Header panel
3. Angle trim
4. "U" Bracket
5. Perimeter Fabric
6. 2" x 4" (51 mm x 102 mm) Vertical pressure treated wood frame
7. 2" x 4" (51 mm x 102 mm) Header pressure treated wood frame
8. Trim
9. Fiberglass stays
10. 4" (102 mm) Yellow guide stripe
11. Spring
12. Foam bead
13. Cover fabric
14. Double ply of fabric on impact area
15. Sliding bracket
16. Protective flaps
17. Scissor extension arm



85 Heart Lake Road South
Brampton, Ontario, Canada L6W 3K2
Phone: 905-457-3900 • Fax: 905-457-2313
www.BlueGiant.com

AUTHORIZED DISTRIBUTOR

BLUE GIANT EQUIPMENT CORPORATION

BLUE GIANT offers a full line of Loading Dock Equipment including Dock Levelers, Vehicle Restraints, Dock Seals and Shelters and Material Handling Solutions. Concurrent with our continuing product improvement program, specifications are subject to change without notice. Please contact BLUE GIANT for latest information. Some features illustrated may be optional in certain market areas.