

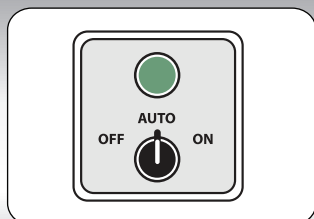
Inflates around the trailer providing an effective seal for a variety of trailer applications

Designed for door openings up to 10' wide x 10' high (3048 mm x 3048 mm) or larger. The IS-V1024 is the optimum solution where a fixed frame shelter is not feasible and a variety of different height and width trailers are serviced. The IS-V1024 is uniquely designed to provide complete access to the trailer openings. Ideal for problem dock areas such as sloped and difficult driveway approaches. Excellent for installation on metal sided building walls. Made with 16 oz "RipStop" fabric developed specifically for inflatable products will give years of trouble-free service. The IS-V1024 creates an optimum seal that blocks out foul weather, insects, dust and dirt, while saving money on energy costs. The inflatable truck seal helps productivity by increasing safety, protecting personnel, products and equipment.

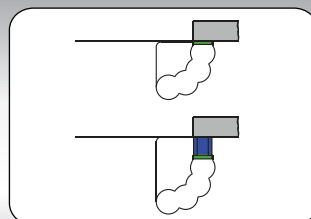


- The IS-V1024 standard dimensions for door openings 10' wide by 10' high (3048 mm x 3048 mm) are 11'4" wide x 11'8" high (3454 mm x 3556 mm) with a 24" (610mm) projection, and a 48" (1219 mm) header air bag when inflated. The IS-V1024 seals trailers 10'6" to 13'6" (3200 mm to 4115 mm) high from grade with a dock height of 48" (1219 mm).
- Galvanized steel cladding cover on canopy.
- Fully automated system available.
- "RipStop" fabric provides greater resistance to wear and tear.
- Galvanized steel sides and strapping supports.
- Long lasting high quality vinyl with U.V. stabilizer to prevent cracking.
- Galvanized steel mounting hardware.

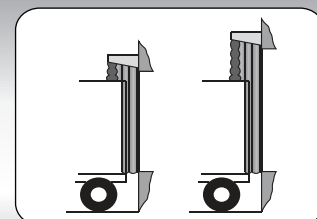
OPTIONS



A. Automatic Switch Kit



B. Extended Projection

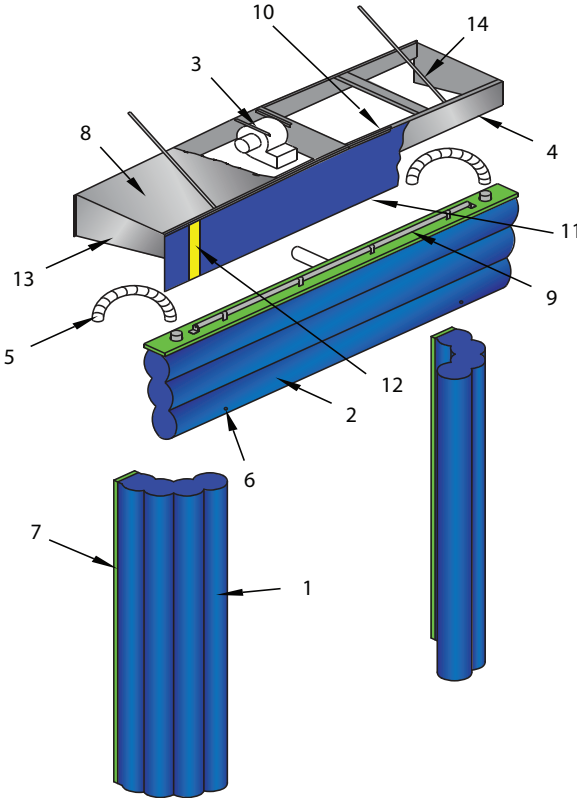


C. Higher Units

Specifications

IS-V1024 Product Details

- IS-V1024 standard dimensions for door openings 10' wide x 10' (3048 mm x 3048 mm) high are 11'4" wide by 11'8" high (3454 mm x 3556 mm) (O.D.) with a 24" (610 mm) projection, and a 48" (1219 mm) header air bag when inflated
- Seals trailer 10'6" to 13'6" (3200 mm to 4115 mm) high from grade with a dock height of 48" (1219 mm). (Consult for longer vertical application requirements)
- 16 oz. "RipStop" fabric developed specifically for inflatable units gives years of trouble free service
- Can be part of a totally automated dock loading system
- Gives full access to the trailer opening
- Designed for standard 5" (127 mm) bumper projection



1. Vertical air bag
2. Header air bag
3. Motor/Blower
4. Galvanized steel canopy (wood optional)
5. Air connector ducts
6. Air vents
7. Galvanized steel side supports (wood optional)
8. Galvanized color steel cladding
9. Torsion spring assembly
10. Finish angle trim
11. Reinforced vinyl curtain
12. 4" (102 mm) yellow guide stripe
13. Side supports
14. Canopy support straps

Specifications

Retractable inflatable truck shelter(s) to be IS-V1024 as manufactured by Blue Giant Equipment Corporation, Brampton, Ontario. Retractable inflatable truck shelter(s) to be manufactured to fit door opening size(s) ____ft./mm wide x ____ft./mm high. Units to consist of two (2) vertical air bags, to be fastened onto a 2" x 8" (51 mm x 203 mm) pressure treated wood frame, (supplied unassembled by manufacturer) using galvanized wood screws. The bottom of the vertical seals to have an inflatable bottom corner seal which will include holes for venting of air and to assist in moisture drainage. Inflatable header air bag to be full width over vertical seals mounted on a pressure treated wood frame. Inflatable header air bag in deflated mode is stored behind a reinforced vinyl curtain with a 4" (102 mm) yellow stripe to aid in the spotting of trailers. Unit to be supplied with 1/2 HP, motor/blower with a manual ON/OFF switch. The motor/blower shall be mounted under a protective canopy constructed of pressure treated wood framework covered with galvanized color steel cladding. The top canopy shall be peaked to allow for drainage and shall be fastened to the wall by means of galvanized steel side and strapping supports. Unit is inflated by turning switch on and deflates automatically when unit is turned off by means of internal pulley and retraction arm system for the verticals and a torsion roller assembly for the header. Unit to be manufactured of 16 oz. vinyl "RipStop" fabric double-stitched, high strength twisted 4 ply 100% polyester bonded thread UV treated used for sewing throughout. Unit shall be furnished with all necessary mounting hardware, galvanized to resist corrosion.



85 Heart Lake Road South
Brampton, Ontario, Canada L6W 3K2
Phone: 905-457-3900 • Fax: 905-457-2313
www.BlueGiant.com

AUTHORIZED DISTRIBUTOR

BLUE GIANT EQUIPMENT CORPORATION

BLUE GIANT offers a full line of Loading Dock Equipment including Dock Levelers, Vehicle Restraints, Dock Seals and Shelters and Material Handling Solutions. Concurrent with our continuing product improvement program, specifications are subject to change without notice. Please contact BLUE GIANT for latest information. Some features illustrated may be optional in certain market areas.