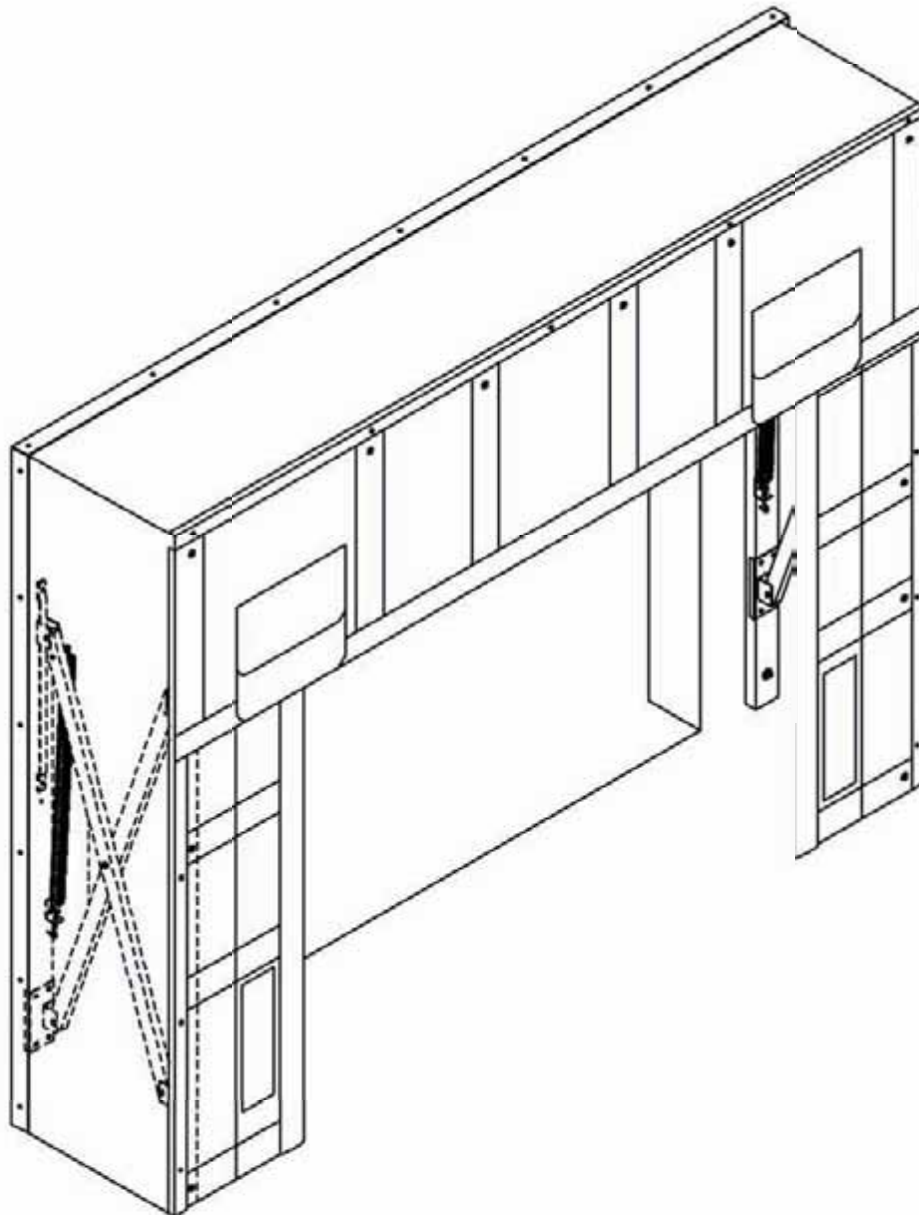


Series 501 – Retractable Truck Shelter

INSTALLATION INSTRUCTIONS

READ ALL INSTRUCTIONS BEFORE INSTALLING SHELTER. BLUE GIANT WILL NOT BE HELD RESPONSIBLE FOR IMPROPER INSTALLATION OF ANCHORING DEVICES, OR FOR INSTALLATION INTO AGED OR UNSOUND CONCRETE, CONCRETE BLOCK, OR OTHER WALL OR FLOOR MATERIAL WHICH MAY RESULT IN PREMATURE PRODUCT WEAR, PRODUCT FAILURE, PROPERTY DAMAGE, OR PERSONAL INJURY.



The Following Lists Cover Basic Installation, Not Including Options.

Components List (Per Assembly)

No.	Description	Qty.
1	Vertical Panels	2
2	Header Curtain	1
3	Trim Angle	3
4	Left Side Scissor Assembly	1
5	Right Side Scissor Assembly	1
6	Projection Material	1
7	Front Header Board	1

Hardware List (Per Assembly)

No.	Description	Qty.
1	3/8" Sleeve Anchor Bolts	12
2	3/8" Washer	26
3	Roofing Nails	60
4	#14 Wood Screws	30
5	24" Wind Straps	2
6	2" Nails	30

**Recommended Tools
(Typical Masonry Wall)**

No.	Description	Qty.
1	Caulking Gun	1
2	Caulking – Outdoor Acrylic Type	
3	Pencil or Marker	1
4	Tape Measure	1
5	Level	1
6	Hammer Drill	1
7	3/8" Masonry Drill Bit	1
8	Hammer	1
9	Square	1
10	Power Drill	1
11	3/8" Hex Head Driver Bit	1
12	#2 Robertson Screwdriver	1
13	#3 Robertson Screwdriver	1
14	Wrench	1

Note: Substitute screws for nails when installing steel frame shelters without wood. See Exhibits at end of section for steel frame drawings.

1. **Read Instructions through completely before installation:**
2. **Measure door to ensure the proper dimensions.**
3. **Review parts list to ensure that all parts have been supplied.**
4. **Determine centerline of door opening and head frame:** Locate centerline of door opening and mark on dock floor. Take ½ the head frame width and mark this distance on both sides of the door centerline (fig. 1).

NOTE: THIS WILL DETERMINE THE OUTSIDE POSITION OF EACH VERTICAL FRAME.

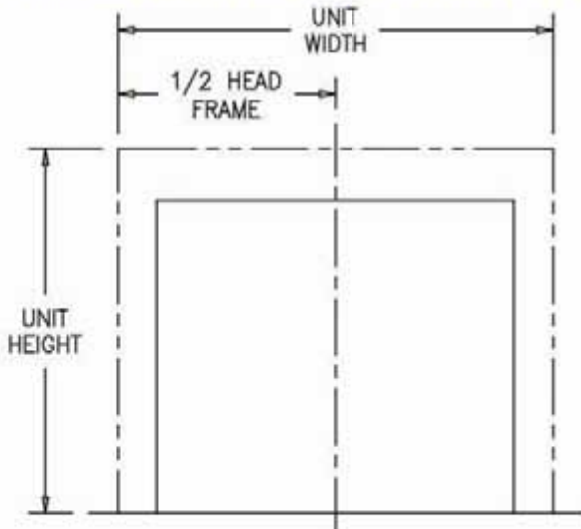


FIG. 1

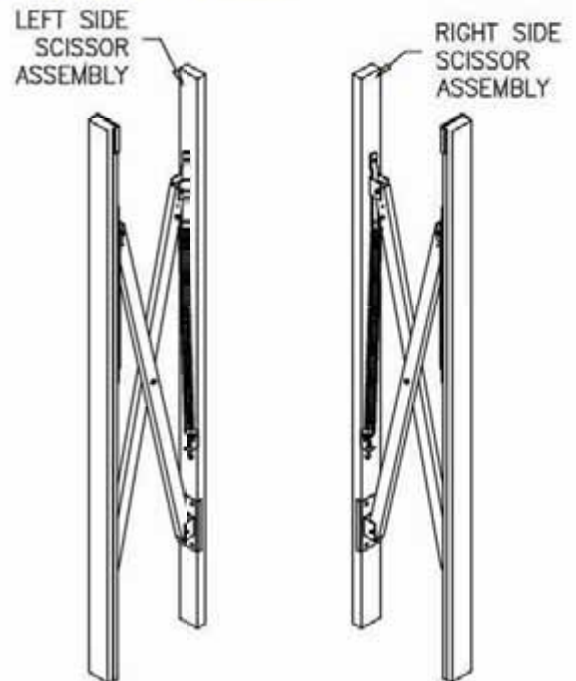


FIG. 2

5. **Determine left and right vertical frames:** The vertical frame should be mounted in a manner which allows the spring assembly to be positioned at the top inside edge "Close to the door opening" (fig. 2).

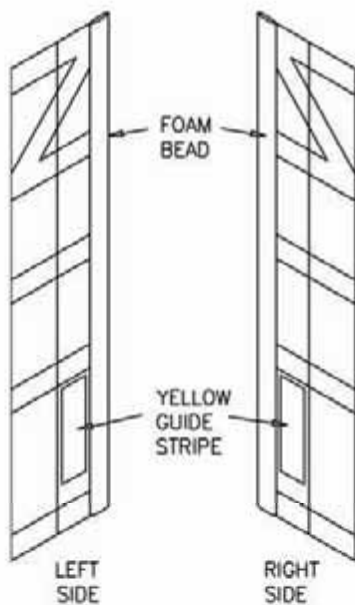
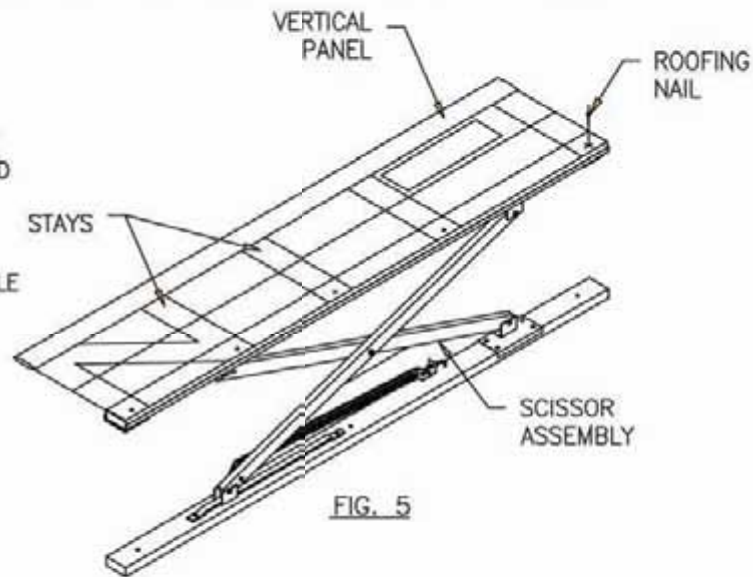
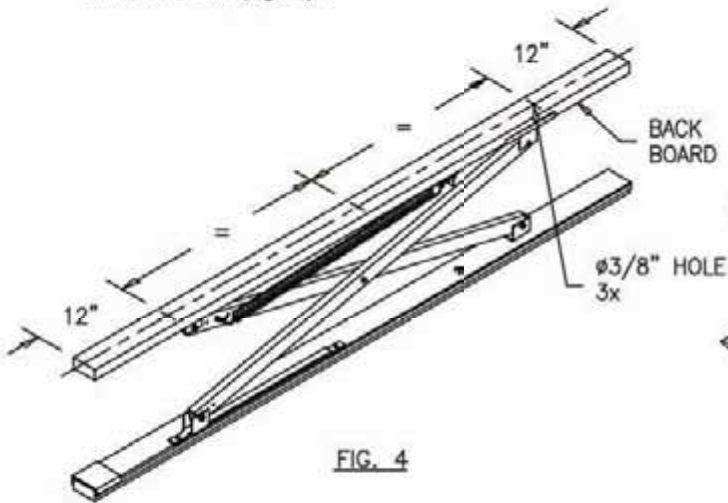


FIG. 3

6. **Determine left and right vertical panels:** The foam bead and yellow guided stripe should be at the leading edge (fig. 3).

7. **Mark and drill holes for 3/8" sleeve anchor bolts:** Position scissor assembly so that the mounting surface is facing up. Mark at center and in from each end of each vertical frame. Mark and drill holes for 3/8" sleeve anchor bolts (fig. 4).



8. **Assemble vertical panels to vertical frames:**

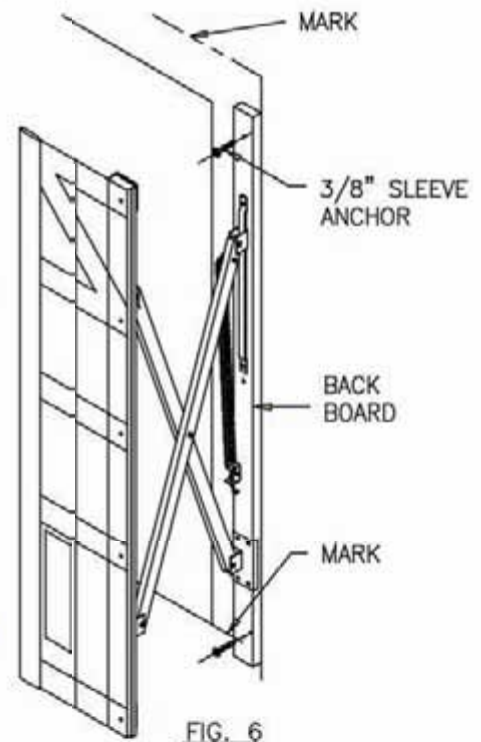
NOTE: ALWAYS MOUNT PANEL FROM THE BOTTOM UP, ENSURING A TIGHT FIT.

- Flip scissor assembly over so that the front surface is facing up.
- Position vertical panel so that the rough edge is flush with the outer edge of the scissor assembly (fig. 5).
- Using roofing nails, nail beside each stay. Nail within 2" of edge (fig. 5).
- Attach angle trim using #14 screw with 3/8" washer.

9. **Mount vertical frames to wall:**

- Position vertical frames on wall so that the outside edge is flush with the vertical lines from fig. 1, and that bottom edge is flush with the floor (fig. 6).
- Be sure that frames are plumb from top to bottom.
- Using 3/8" concrete drill bit, drill designated holes.
- Insert 3/8" sleeve anchors and tighten with 1/2" socket wrench (fig. 6).

NOTE: THE SCISSOR EXTENSION ARMS MAY EXTEND FORWARD WHEN MOUNTING THE VERTICAL FRAMES. USE CAUTION WHEN MOUNTING THE FRAME.



10. Mount rear header board:**NOTE: THIS IS JUST A PLAIN 2X4 WITH NO STEEL TONGUE ATTACHED**

- Lay rear header board on floor and mark mounting holes with one (1) at center and one 12" in from each end (fig. 7).
- Position rear header board into place (figure 8).
- Using 3/8" concrete drill bit, drill designated holes.
- Insert 3/8" sleeve anchors and tighten with 1/2" socket wrench (fig. 8).

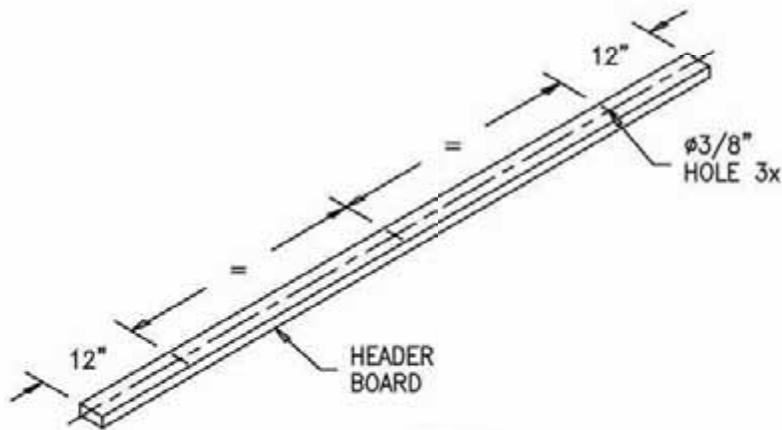


FIG. 7

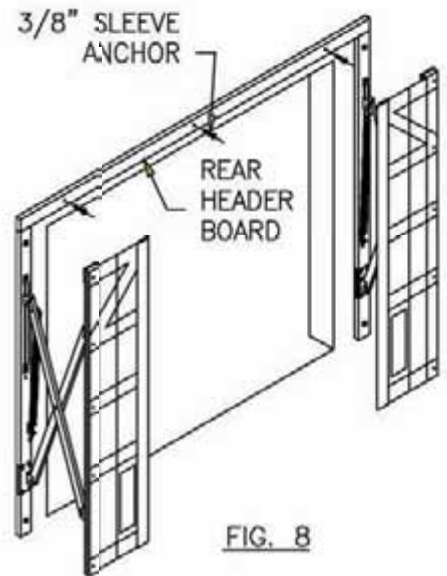


FIG. 8

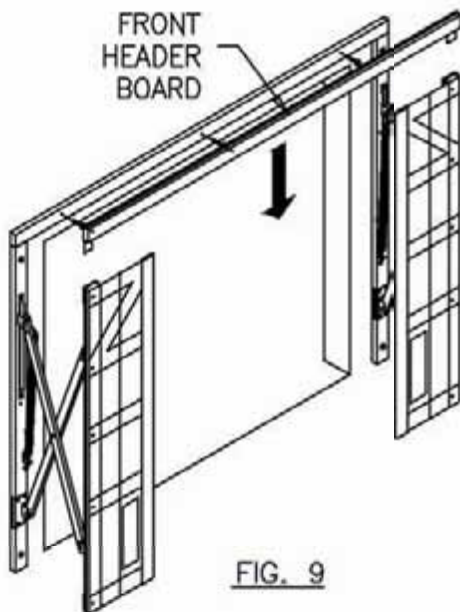


FIG. 9

11. Attach front header board:

- Connect front header board to left and right verticals by sliding tongues at each end of front header board into slots at top end of verticals (fig. 9).

12. Attach header curtain to frame: Mount curtain starting from the center and working outwards to ensure a tight fit.

- Using roofing nails; attach header curtain from center and work outwards by nailing beside each stay (fig. 10).
- **NAILTOP EDGE ONLY!**

NOTE: PROJECTION MATERIAL TO BE ATTACHED LATER.

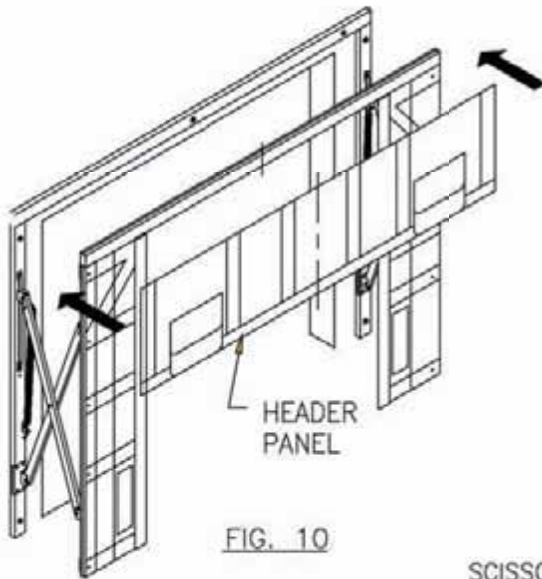


FIG. 10

13. Attach projection material: Prior to attaching the projection material, release retraction arm to the desired projection. To ensure that this position remains constant, tie off arms with rope (fig. 11).

- Release the projection material from the top center down both sides of the unit (fig. 12).
- Nail or staple fabric to wood frame, ensuring a proper fit.

NOTE: PROJECTION MUST OVERLAP HEAD CURTAIN. ALWAYS ENSURE A PROPER FIT.

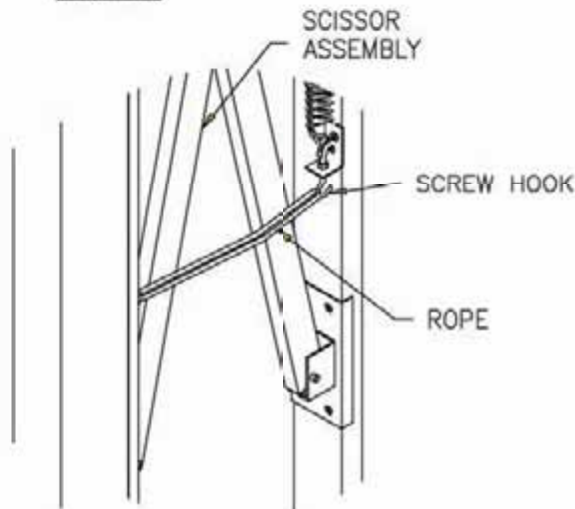


FIG. 11

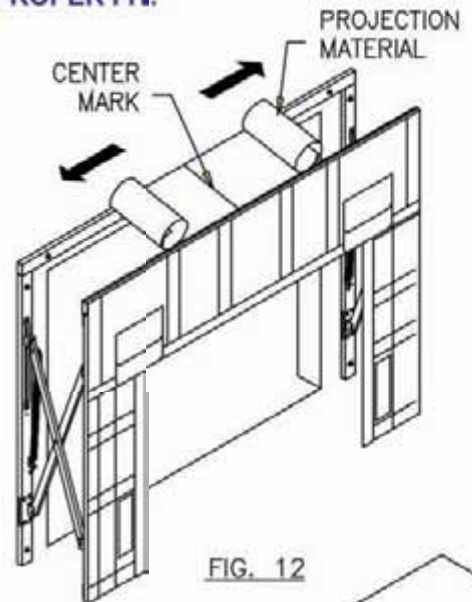


FIG. 12

14. Mount trim angle to head curtain:

- Position trim angles over top edge of head curtain (fig. 13).
- Tighten with wood screws through predrilled holes on trim angle.

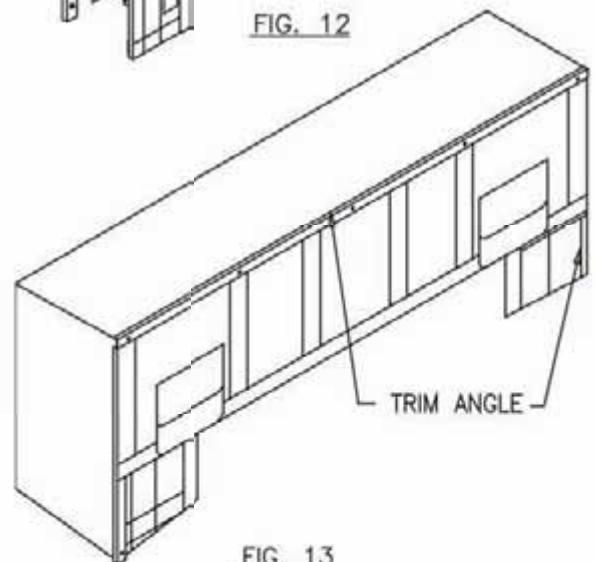
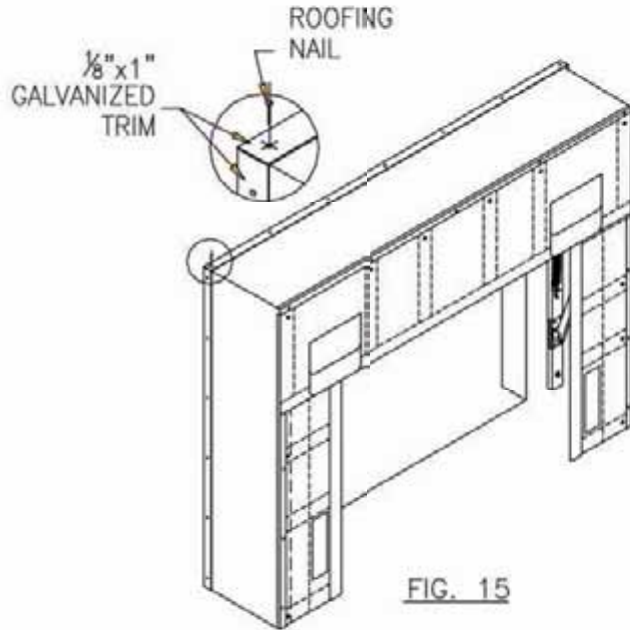
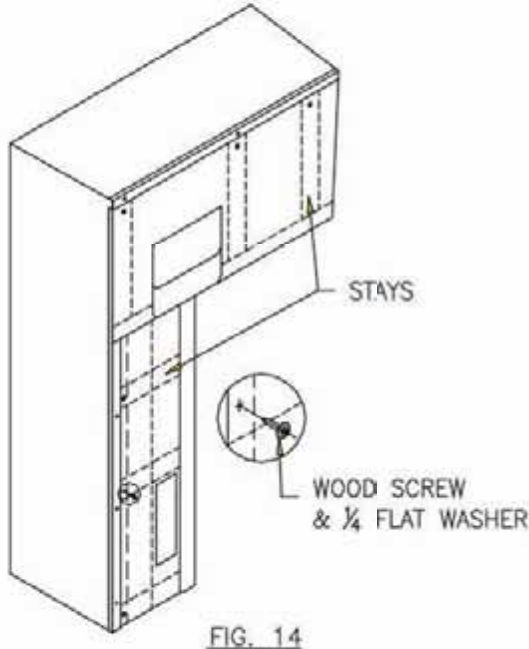


FIG. 13

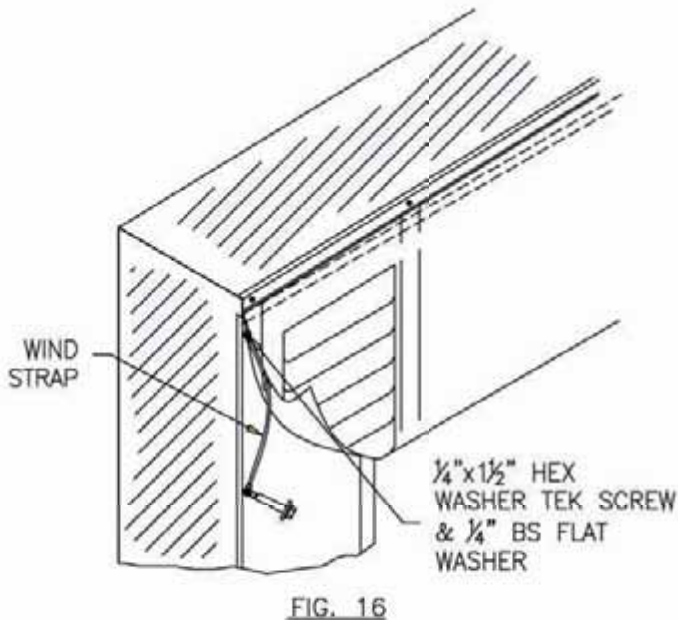
15. Secure stays for vertical panels and head curtain:

- Using wood screws along with 1/4" flat washers; fasten vertical panels and header curtain by screwing through the center of each stay, close to the trim angle (fig. 14).



16. Mount 1/8"x1" Galvanized trim:

- Fasten the 1/8"x1" galvanized trim flush with the outside frame of the unit and building wall, using roofing nails (fig. 15).



17. Attach head curtain wind straps to side frames:

- Secure wind straps with 1/4" x 1 1/2" hex washer tek screws and 1/4" BS flat washers (fig. 16). Bungee must be snug.

18. Caulk between head frame and wall:
Outside only.

NOTE: IF MOUNTING ON SIDING OR PRE-CAST BUILDING, FILL GAPS WITH STYROFOAM.

Exhibits for steel frame units

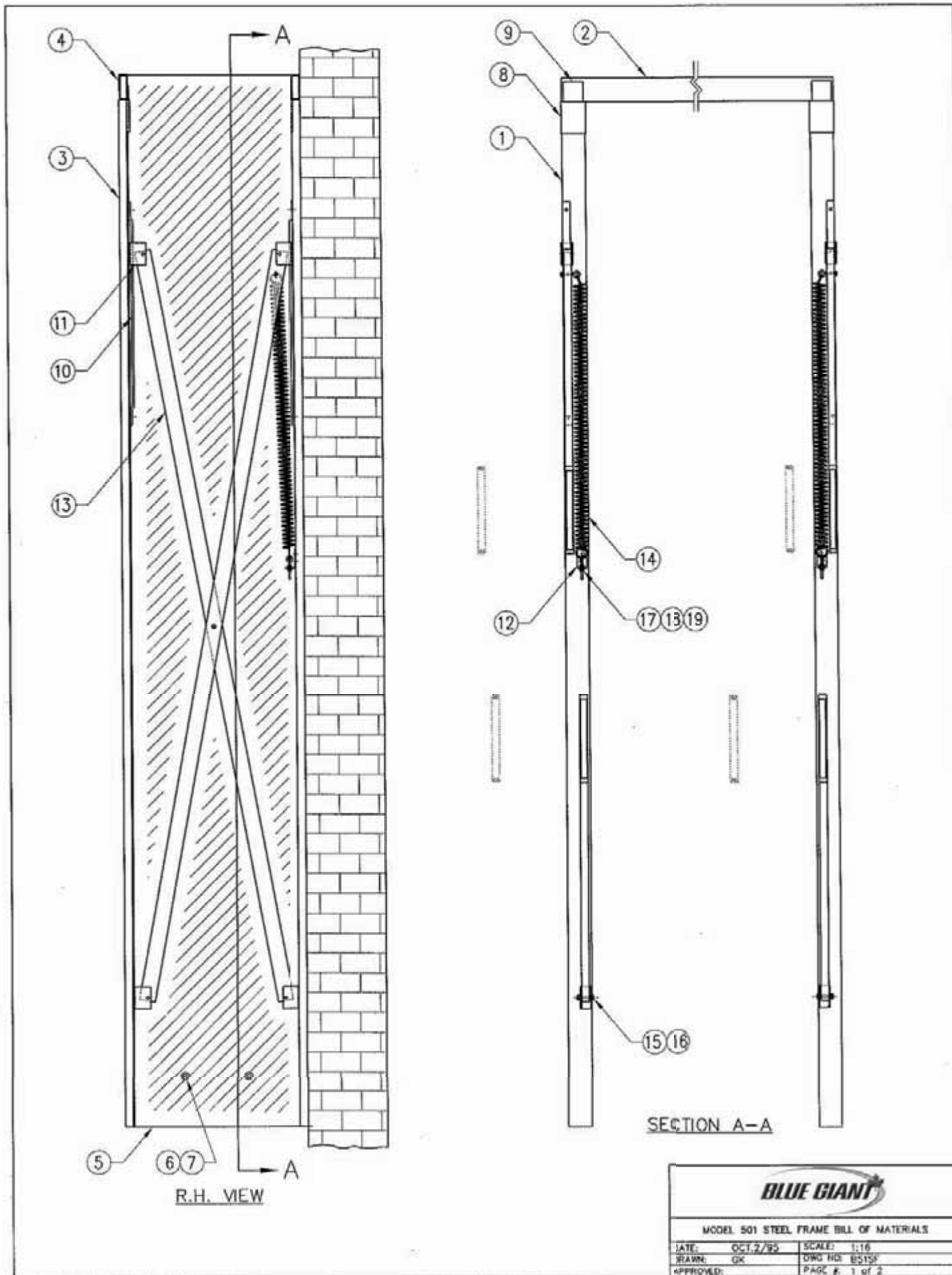


Exhibit for steel frame units

BILL OF MATERIALS FOR MODEL 0501 STEEL FRAME

NO.	PART NO.	QTY.	DESCRIPTION	COMPONENT
1		*	1" x 3" x 1/16" TUBE - VERTICAL FRAME MEMBER	VERT. FRAME
2	10-0065	*	1" x 3" x 1/16" TUBE - HEADER FRAME MEMBER	HDR. FRAME
3	10-0010	*	1" x 2" x .050 ALUMINUM ANGLE - VERTICAL	VERT. FRAME
4	10-0015	*	1" x 2" x .050 ALUMINUM ANGLE - HEADER	HDR. FRAME
5	SEE FABRIC CHART	*	PROJECTION FABRIC	PROJECTION FABRIC
6	06-0615	*	#2 SHEET COILED WASHER	PROJECTION FABRIC
7	06-0620	*	#2 SHEET EYELET	PROJECTION FABRIC
8	10-0145	2	"U" CHANNEL x 4" - VERTICAL SLOT	VERT. FRAME
9	CUT FROM SCRAP	2	6" x 2 1/2" x 12 GA. STEEL PLATE - HEADER TAB	HDR. FRAME
10	06-0510	4	28" SLIDING BRACKET	VERT. FRAME
11	06-0495	8	"U" BRACKET	VERT. FRAME
12	06-0480	2	501-601 SPRING BRACKET	VERT. FRAME
13	06-0505	2	COMPLETE SCISSOR ARMS	VERT. FRAME
14	06-0300	2	15" SPRING	VERT. FRAME
15	07-0395	8	3/8"-16 x 1 3/4" RSMS - ZINC	VERT. FRAME
16	07-0040	8	3/8"-16 LOCKNUT - ZINC	VERT. FRAME
17	07-0255	4	1/4"-20 x 3" EYE BOLT - ZINC	VERT. FRAME
18	07-0000	6	1/4"-20 HEX NUT - ZINC	VERT. FRAME
19	12-0110	2	1/4" B.S. PLATE WASHERS	VERT. FRAME
---NOT SHOWN---				
	07-0430	12	3/8" x 3" SLEEVE ANCHORS	H/W BOX
	07-0180	31	1/4 x 3/4" HEX HD. TEK SCREWS - ZINC	H/W BOX
	12-0110	31	1/4" B.S. PLATE WASHERS	H/W BOX
	06-0150B	2	ASSEMBLED BUNGEE CORD - 24" LONG	H/W BOX
	15-0120	1	INSTALLATION INSTRUCTIONS	H/W BOX
	08-0035	1 lb.	.035 MIG WIRE	HDR. & VERT. FRAME

* AS INDICATED BY CUSTOMER SPECIFICATIONS AND SUBSEQUENT REQUIREMENTS

FABRIC CHART

PART NO.	DESCRIPTION
06-0010A	22 oz. VINYL - BLACK
06-0010B	22 oz. VINYL - BLUE
06-0010C	22 oz. VINYL - GREY
06-0010D	22 oz. VINYL - GREEN
06-0010E	22 oz. VINYL - BROWN
06-0015A	SS-90-1 - BLACK
06-0015B	SS-90-1 - BLUE
06-0015C	SS-90-1 - GREY
06-0020A	SS-90-2 - BLACK
06-0020B	SS-90-2 - BLUE
06-0020C	SS-90-2 - GREY
06-0020D	SS-90-2 - GREEN
06-0020E	SS-90-2 - BROWN
06-0020F	SS-90-2 - RED
06-0025	40 oz. NEOPRENE - BLACK
06-0035	40 oz. HYPALON - BLACK

NOTE

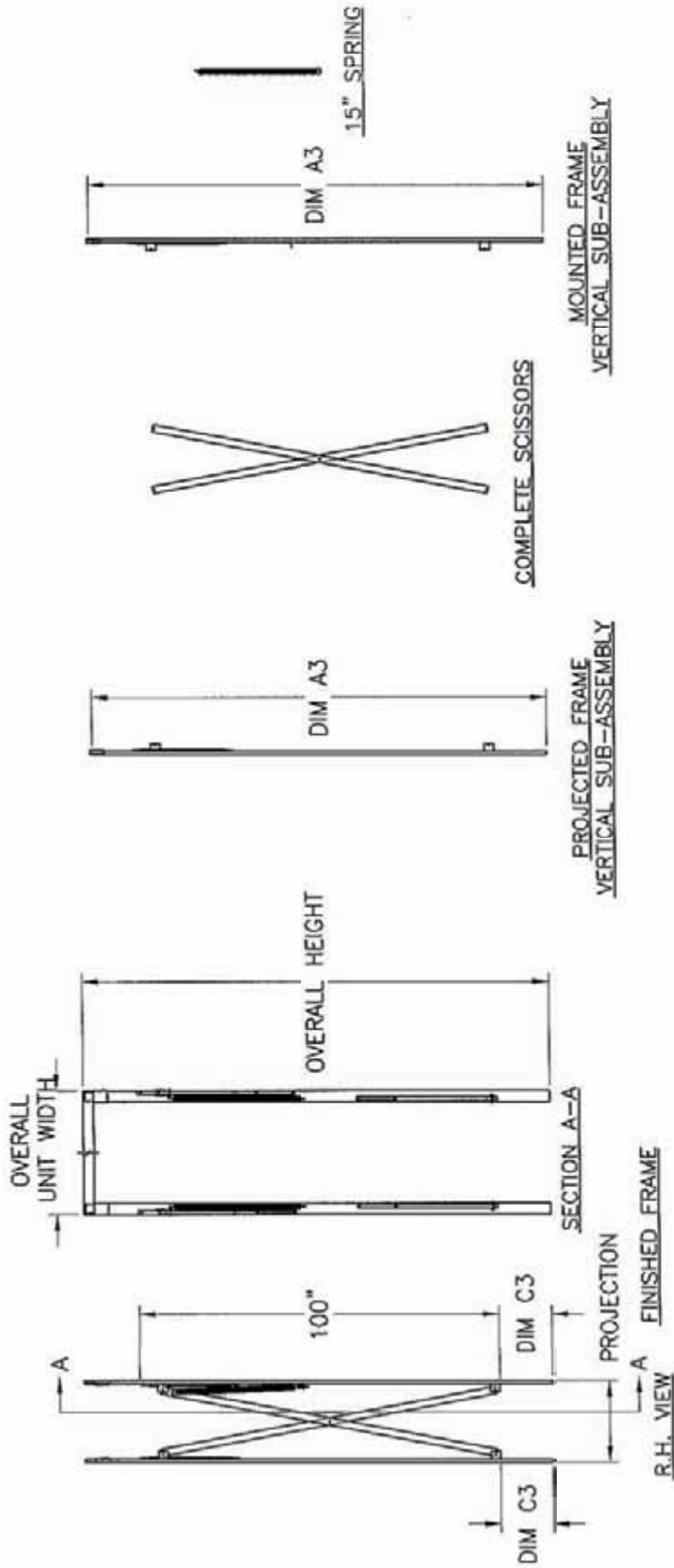
QUANTITIES LISTED ARE FOR MODELS WITH VERTICAL FRAMES UP TO 13' HIGH, HEADER FRAMES UP TO 12' WIDE AND 5' PROJECTION. FOR MODELS LARGER CONSULT ENGINEERING.



MODEL 501 STEEL FRAME BILL OF MATERIALS

DATE: OCT. 2/95 SCALE: 1:16
 DRAWN: GK DWG NO: 8515F
 APPROVED: PAGE # 2 of 2

Exhibit for steel frame units

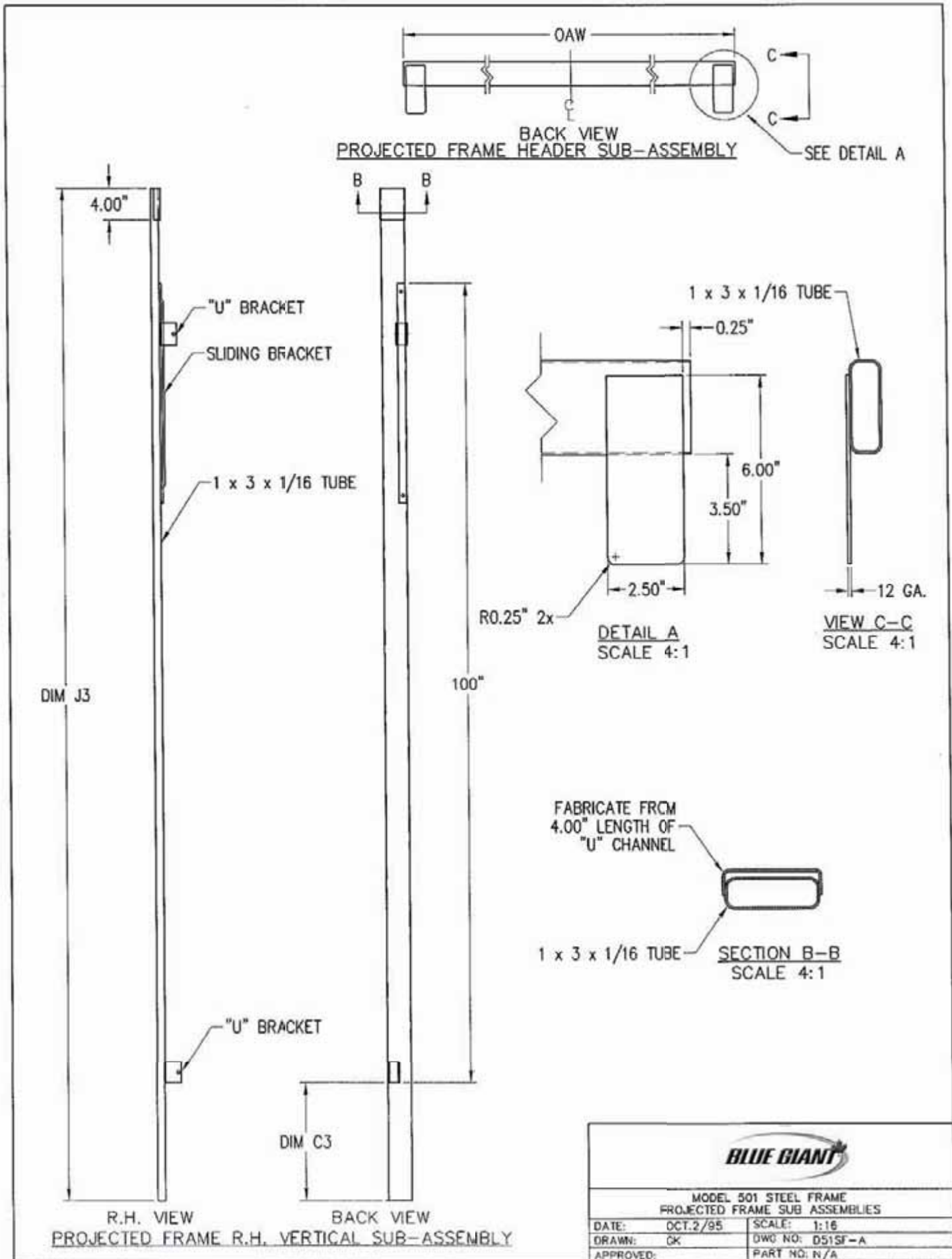


PROJECTED & MOUNTED FRAME
HEADER SUB-ASSEMBLY



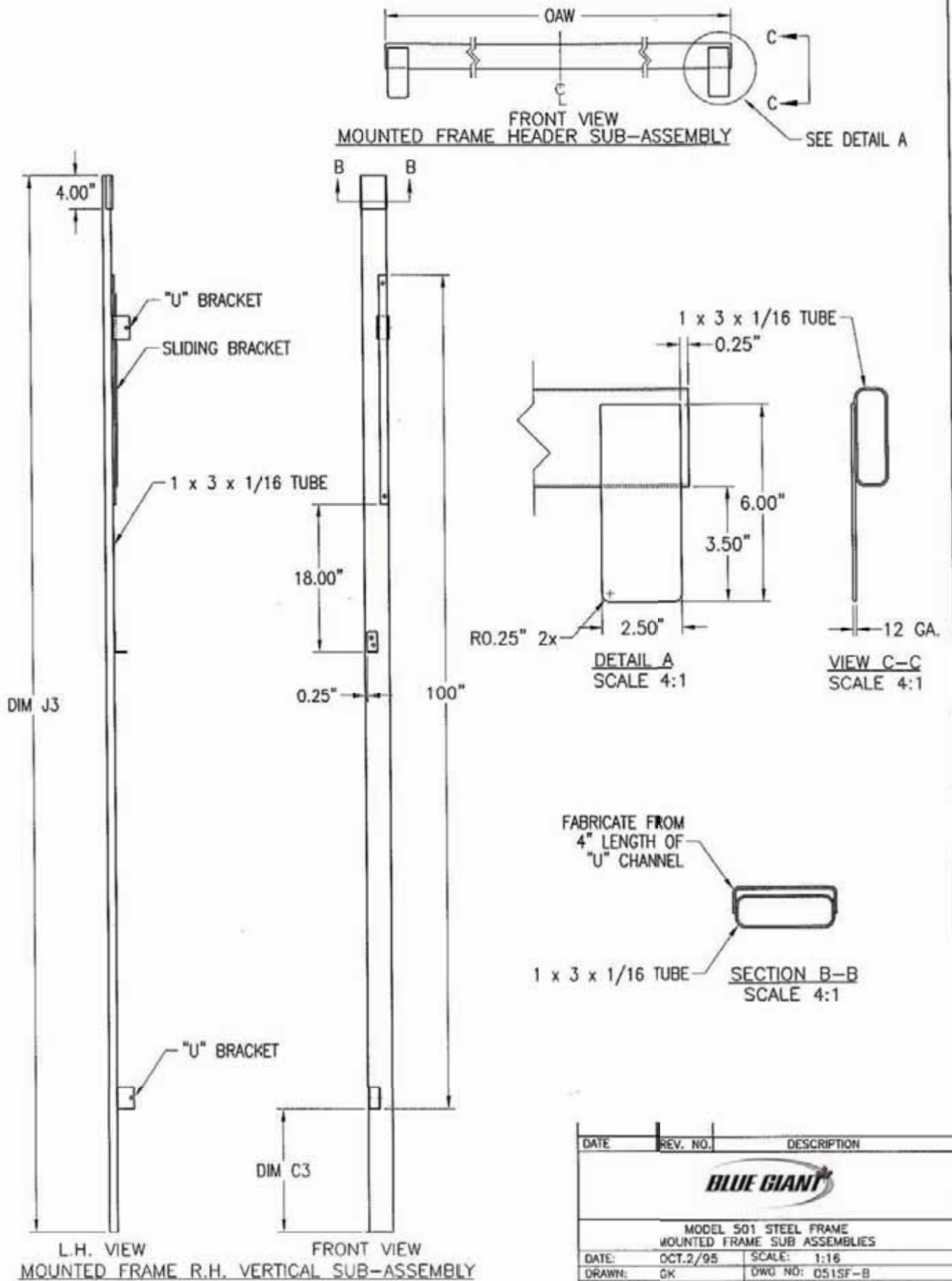
MODEL 501 STEEL FRAME CUT SHEET	
DATE: OCT.5/95	SCALE: 1:48
DRAWN: GK	DWG NO: C51SF
APPROVED:	PART NO: N/A

Exhibit for steel frame units



BLUE GIANT		
MODEL 501 STEEL FRAME PROJECTED FRAME SUB ASSEMBLIES		
DATE:	OCT.2/95	SCALE: 1:16
DRAWN:	GK	DWG NO: D51SF-A
APPROVED:		PART NO: N/A

Exhibit for steel frame units



DATE	REV. NO.	DESCRIPTION
BLUE GIANT		
MODEL 501 STEEL FRAME MOUNTED FRAME SUB ASSEMBLIES		
DATE:	OCT.2/95	SCALE: 1:16
DRAWN:	GK	DWG NO: 051SF-B
APPROVED:		PART NO: N/A