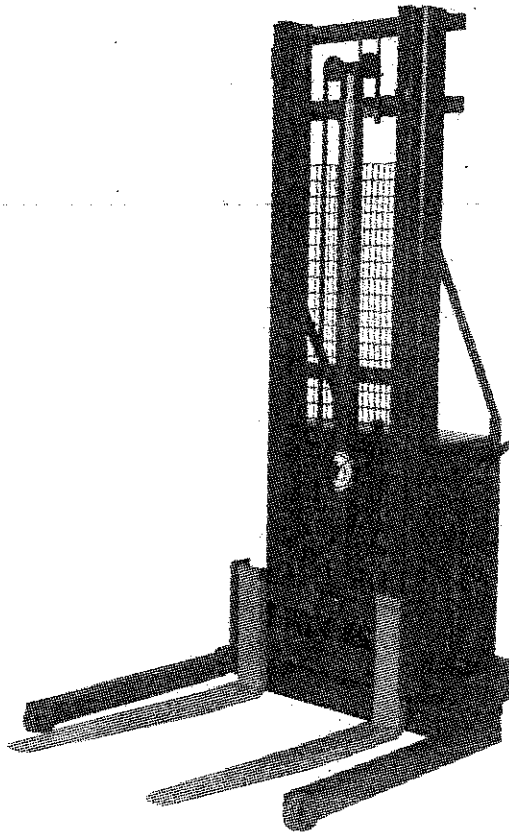


OWNER / OPERATOR MANUAL

BLUE GIANT®

Stacker

P-Series



WARNING: This manual may not be copied, quoted, or transferred in any form or medium to any individual or company, in whole or in part, without written consent from Blue Giant.

BLUE GIANT EQUIPMENT CORPORATION

85 Heart Lake Road South, Brampton, ON L6W 3K2

Phone: 866 889 8766 / 905 457 3815

Fax: 866 882 8998 / 905 450 6555

www.BlueGiant.com

C

C

C

C

C

Contents Of This Manual

IMPORTANT: Read and understand the contents of this manual before operating the equipment.

THANK YOU FOR PURCHASING THIS BLUE GIANT PRODUCT

SUBJECT	PAGE
Receipt Inspection	1
Warranty	2
Safety Information	3
Initial Delivery Inspection	3
Operating Instructions	4
Control Devices	4
Pre-Operation Inspection	5
Battery and Charger Information	5
Straddle Adjustment	6
Planned Maintenance	7
General Assembly	8-9
Electrical / Hydraulic Components	10
Service / Maintenance History	11
Recommended Spare Parts	12
To Order Spare Parts	12

RECEIPT INSPECTION

This equipment was thoroughly inspected and tested prior to leaving the factory. Before placing the equipment in service it should be thoroughly checked for damage or loss occurring in transit. If any such damage or loss is evident, a claim must be made against the carrier.

Refer to: Damage in Transit information enclosed with the packing slip.

Warranty Policy Stackers

Manually Propelled - Power Lift

BLUE GIANT warrants to the original purchaser its stackers to be free from defective factory material and workmanship. All warranties begin on the date of delivery to the first user or the sixtieth (60) day after date of shipment, whichever comes first.

Parts or components which fail under normal usage within the following specified time periods and are proven to be defective will be repaired or replaced by BLUE GIANT without charge for parts or labor unless stated otherwise herein. Replacement parts will be supplied F.O.B. factory.

WARRANTY TIME PERIODS:

1. 1 YEAR OR 2000 HRS. OPERATION WHICHEVER OCCURS FIRST.

Weldments, casting and lift chains.

2. 6 MONTHS OR 1000 HRS. OPERATION WHICHEVER OCCURS FIRST.

Lift motors (except brushes), pumps, hydraulic hoses, hydraulic cylinders, wiring harnesses, oil seals and valves.

3. 90 DAYS OR 500 HRS. OPERATION WHICHEVER OCCURS FIRST.

Motor brushes, contactors, switches, fuses, transformers, bushings, bearings, wheels, axles, batteries, chargers, fasteners, and connectors.

WARRANTY IS VOID IF:

1. Warranty validation form is not completed and returned to BLUE GIANT.
2. Equipment is operated in abrasive or corrosive condition, freezers, or excessive moisture.
3. Equipment is modified or repaired in any manner not approved by BLUE GIANT.
4. Equipment is overloaded beyond rated capacity.

THE FOLLOWING ARE NOT COVERED UNDER WARRANTY:

1. Adjustments, including initial field set-up. Adjustments are considered part of normal maintenance procedures.
2. Repairs required as a result of:
 - Failure to follow maintenance and/or lubrication procedures specified in the owner's manual.
 - Abuse, willful damage, accident or neglect.
 - Shipping damage (claim must be made with freight carrier).

BLUE GIANT DOES NOT ASSUME RESPONSIBILITY OR LIABILITY FOR INCIDENTAL, CONSEQUENTIAL OR SPECIAL DAMAGES, OR FOR LOSS OF PROFIT OR DAMAGE TO TRADE OR BUSINESS WHICH RESULTS FROM THE EQUIPMENT.

THE ABOVE WARRANTIES ARE IN LIEU OF ANY OTHER WARRANTIES, EITHER EXPRESSED OR IMPLIED, INCLUDING BUT NOT LIMITED TO ANY IMPLIED WARRANTY OF MERCHANTABILITY OR FITNESS FOR A PARTICULAR PURPOSE. THERE ARE NO WARRANTIES WHICH EXTEND BEYOND THE DESCRIPTION CONTAINED HEREIN.

BLUE GIANT®

W002-0994

Safety Information

A) Introduction

The following is intended to be a quick reference to some of the important procedures to follow while using this stacker. It is not intended to cover, or suggest that it does cover, all procedures required to be followed to ensure safe operation. Operators should be aware of and abide by all workplace safety regulations that may apply to the operation of this stacker. These laws and regulations include but are not limited to:

- Occupational Safety and Health Act (USA).
- Occupational Safety and Health Acts for Individual States (USA).
- Canadian Material Handling Regulations.

In addition to these regulations, industry standards such as the American National Standards Institute (ANSI) "ASME B56.10 Safety Standard for Manually Propelled High Lift Industrial Trucks" applies to this equipment. To obtain a copy of this standard, contact the Sales Department:

American National Standards Institute
1430 Broadway, New York, NY 10018
or call: (212) 642-4900

B) Safety Instructions

- Do not operate this truck unless you have been trained and authorized to do so.
- Do not ride truck and do not carry passengers.
- Do not operate this truck until you have checked its condition (refer to "Pre-Operation Inspection" section of this manual).
- Report the need for truck repairs to your supervisor. Do not operate truck. Neglect may cause a minor repair to become a major service problem or cause truck to become unsafe.
- This truck is intended for use on smooth level surfaces only. Do not use on ramps or grades, rough or broken floors.
- Do not exceed the rated capacity of the vehicle as marked on the nameplate. Do not lift with the fork tips or one fork only. Be sure load is centered on forks (along the length and width of the load) and the load center (marked on name-plate) is not exceeded.
- Do not handle unstable or loosely stacked loads. Use special care when handling long, high or wide loads to avoid tipping, loss of load or striking personnel or objects.
- Always look in direction of travel. Keep a clear view and when load obstructs visibility, travel with load lowered.
- Watch swing clearance when turning near walls, racks, pillars or other obstacles.
- Observe applicable traffic regulations and yield right of way to pedestrians
- Before you leave the truck, fully lower forks to ground and set parking brake.

Initial Delivery Inspection

1. Open battery cover and check wiring harness and hydraulic hoses for damage or loose connections.
2. Open battery compartment and check that all connections are tight. Check that batteries have not been damaged. Charge battery(s) for one shift. Refer to Battery Maintenance Instructions (page 6).
3. Refer to "Operating Instructions" (page 4), and check that stacker operates satisfactorily.

Important Notice: During initial cylinder assembly, hydraulic fluid is used to lubricate all components.

This assembly fluid may be present, or accumulated in upper headnut portion of cylinder during break-in period or normal use. A small amount of fluid in this area is normal and should not be mistaken for cylinder seal leakage.

4. Complete Warranty Validation Form provided with this manual and return it to Blue Giant.

Operating Instructions

P" Series Stackers (manually propelled, power lift - identified by the letter "P" as the first letter appearing in the model number on the stacker's nameplate).

Refer to the photograph and instructions below to control the stacker.

a) Travel

Securely grasp steering handles with both hands and push or pull stacker to move or position. If stacker is equipped with an optional steering handle, move and steer stacker by pushing or pulling on handle. Be sure to keep feet clear of machine at all times.

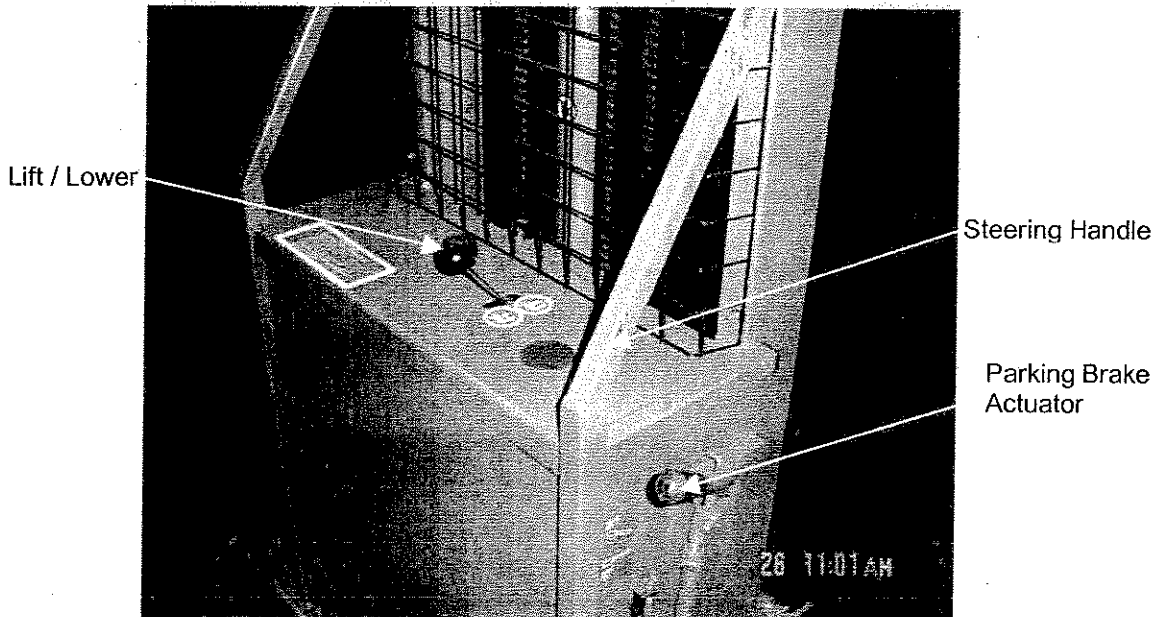
b) Lift / Lower

To raise forks, pull back on control lever. To lower forks, push forward on control lever.

c) Parking

To engage parking brake, push down on brake actuator until lever locks in lower most position. To release brake, pull up on brake actuator.

Control Devices



Pre-Operation Inspection

Workplace safety regulations require that all trucks be inspected before each shift. Follow inspection point list below to complete this check. If anything is found to be wrong with truck, then it must be taken out of operation. Do not use a truck which fails this inspection.

Inspection Point List:

1) Safety Equipment

- **Load backrest (if equipped)**
 - is backrest in place, is there any damage which weakens it.
- **Warning decals** - make sure all decals are in place and readable.
- **Mast safety screen** - is it in place and free of obvious damage?

2) General Operation:

- **Parking brake** - test brake for proper braking.
- **Lift/lower control** - operate lift function to full lift height. Listen and watch for unusual sounds or jerky motions. Operate lower control until forks are fully lowered. Listen and watch for unusual sounds or jerky motions. Throughout inspection, look for signs of hydraulic fluid leaks

3) Forks and Fork Carriage:

- Inspect forks for cracks, wear and alignment. Obvious damage fails inspection. Maximum allowable fork blade wear is 10% of fork back (vertical member of fork).
- Fork carriage - carriage is part of truck to which forks attach. Inspect carriage for cracks, damage or wear.

4) Wheels:

- All tires must be inspected for cuts, breaks, signs of de-bonding (coming away from rim).
- Material imbedded in tires or axles must be removed (i.e., steel shavings, string, plastic wrap etc.)



DANGER

Disconnect battery before attempting removal of imbedded materials

BATTERY and CHARGER INFORMATION

The care and maintenance of the battery is very important to efficient equipment operation and maximum battery life.

Battery electrolyte level should be checked before each charge of the battery. The level should be maintained at one-half inch above plates or just below the lower lip of the filler hole at all times. If low, add distilled water preferably at the end of the charge. Do not overfill.

Always keep vent plugs tightly in place when cleaning battery. When properly watered and charged, the battery will remain clean and dry. All that is necessary is to brush or blow off any dust or dirt which may accumulate on it.

However, if electrolyte has spilled it should be neutralized with a solution of baking soda and water. Then rinse the battery with cool water from a low pressure hose to remove the soda and water. If battery stays wet consistently, it may be an indication of overcharging or overfilling.

The equipment is supplied with a 110 volt/1/60 cycle AC charger that when plugged into a 110 volt outlet will automatically charge the battery to its proper level.

Do not operate stacker while the charge is plugged in. Failure to follow this instruction may result in damage to the stacker.

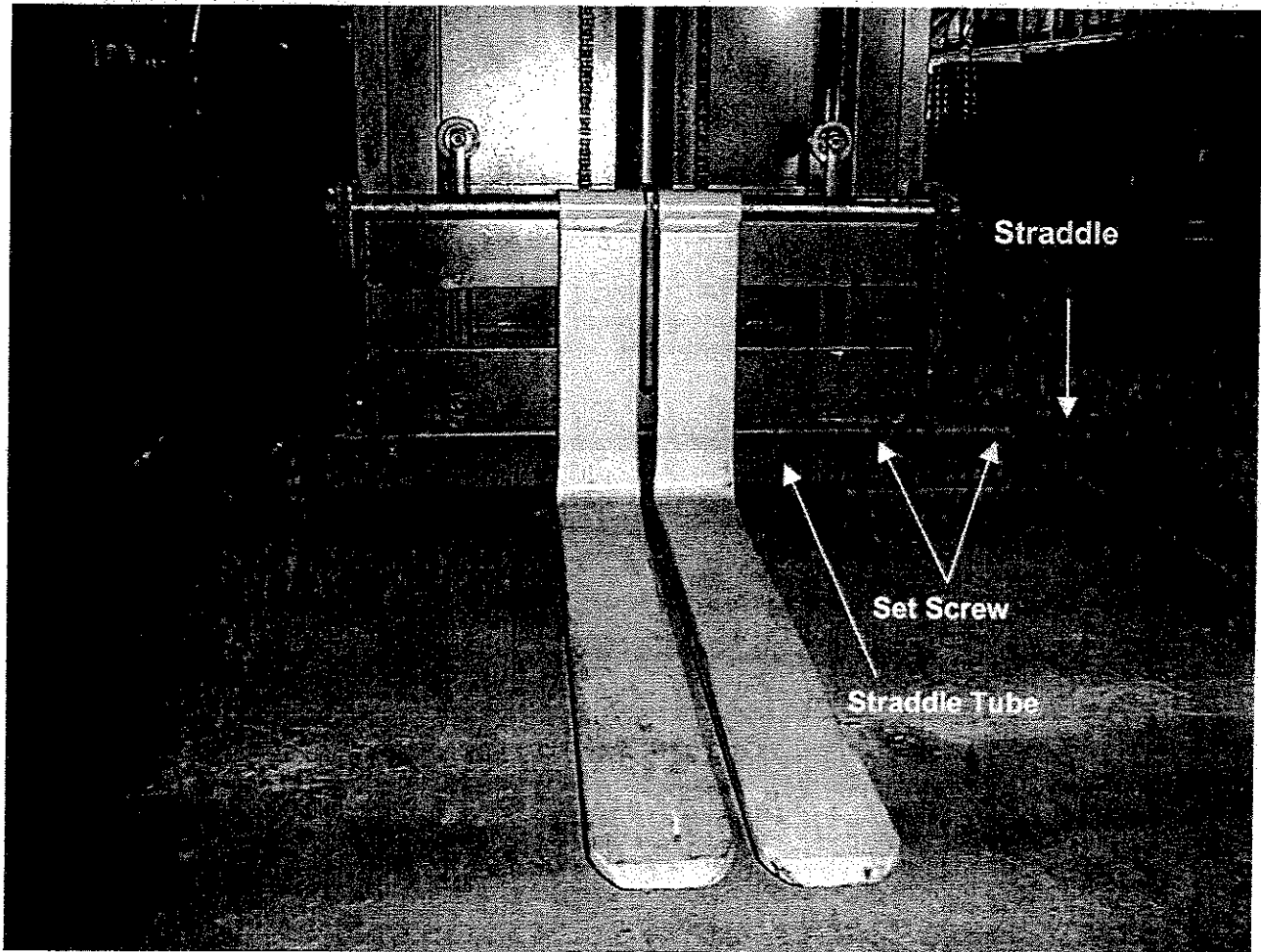


CAUTION

Do not operate stacker while the charge is plugged in. Failure to follow this instruction may result in damage to the stacker.

Straddle Adjustment

To adjust the straddles on the stacker, remove the weight of the machine from the straddles by lifting / jacking under the straddle tube. Heat the four set screws to remove any "Loctite" that was applied during assembly. Turn set screws counterclockwise to loosen tension from the straddles. Slide straddles to desired setting. Apply small amount of "Loctite" #271 to set screws and tighten. Remove lifting / jacking device.

**WARNING**

- The spread between the straddle legs must not be:
- less than 25% of the stackers maximum lift
 - more than 50" (1270 mm)

Planned Maintenance

Planned maintenance is a program in which inspection, minor adjustments and lubrication are performed on a schedule and systematic basis. A solid PM program should incorporate a method of record keeping which enables you to better determine PM schedules and enables you to track the maintenance cost per machine.

An effective PM program should incorporate two procedures:

- 1) A pre-operation check by the driver or maintenance personnel at the beginning of each shift (see page 5).
- 2) A planned maintenance routine based on operating hours, with the interval being determined by operating conditions.

Records will tell you how often PM should be done. If an operation is clean and / or involves low operating time per day, a PM interval can be extended. If an operation is extremely dirty and / or involves high operating time per day, the PM interval may have to be reduced. Thus the PM interval can be tailored to answer the needs of the operation.

If the PM is religiously followed, needs for repair, major adjustment and component replacement will be discovered automatically and such work will be done as needed.

The PM Objective:

- 1) To reduce costly unscheduled downtime.
- 2) Reduce maintenance costs.
- 3) Increase equipment productivity.
- 4) Above all, to increase personal safety of operators and other personnel

Inspection intervals outlined are for normal conditions. More frequent inspections are necessary for adverse conditions such as: temperature extremes, several operators, dusty atmosphere, etc.



WARNING

Disconnect the battery before attempting inspection or service

RECOMMENDED PM INTERVALS:

Daily: Operating Controls
Battery

Quarterly: Electrical Systems
Hydraulic Systems
Mechanical Parts

Lubrication: (based on single shift, normal usage).

Every Month:

Apply engine oil (SAE 10) to all pivot points including the lifting chains. Lubricate the mast channels with a good quality grease (Valvoline #614 or equivalent).

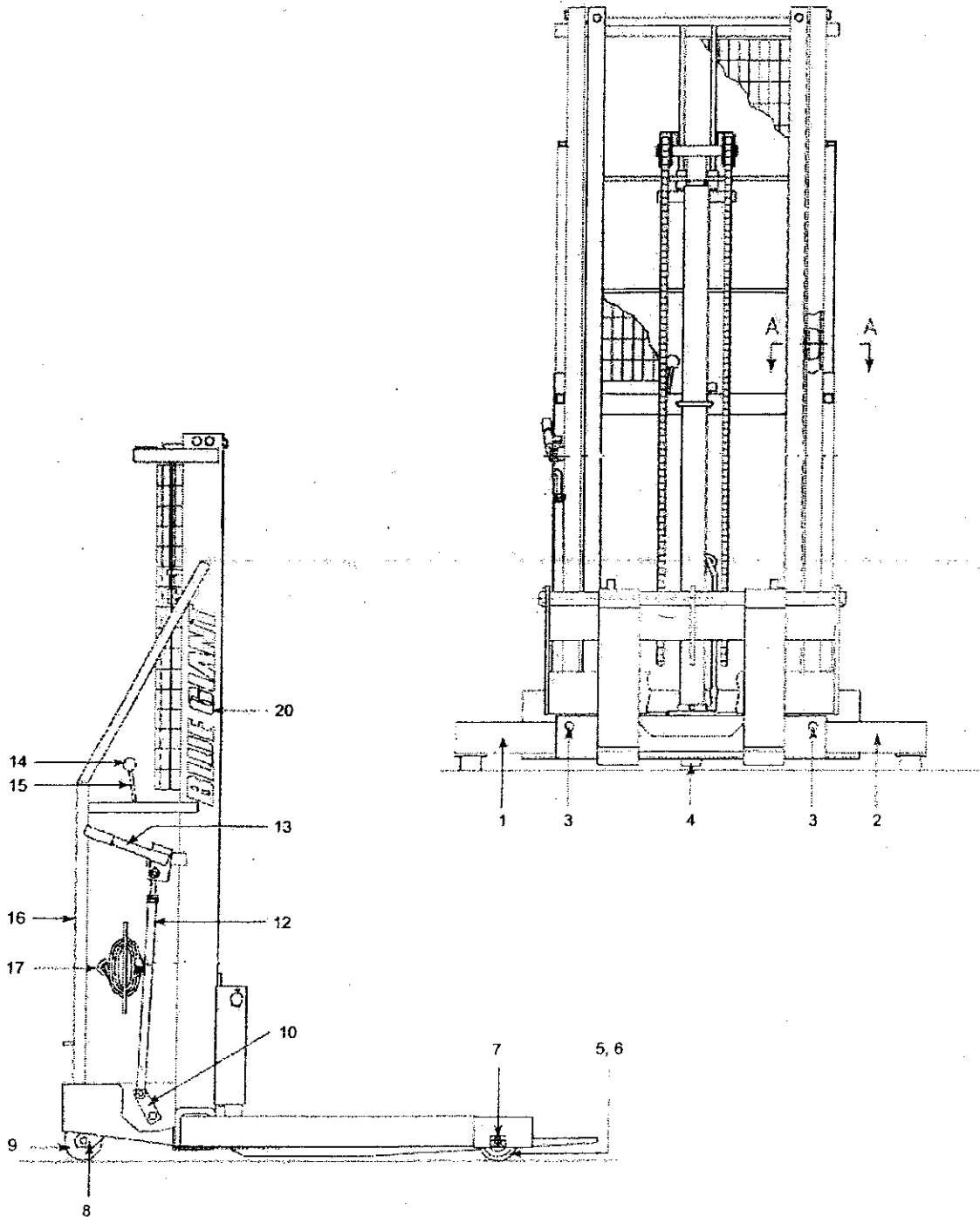
Every 6 Months:

Check oil level in the hydraulic power pack. Remove breather cap and add approved oil until oil is level with bottom of filler hole (be sure lift is in the fully lowered position). Clean and reinstall the breather cap.

The hydraulic oil should be changed after the truck has been in service for three months then every six months thereafter. Remove reservoir, discard used oil and clean reservoir. Clean and inspect the strainer on the fluid pick up tube. Reinstall reservoir and add oil until oil is level with bottom of filter hose (be sure the lift is in the fully lowered position). Use only good quality hydraulic oil with a viscosity equivalent to SAE 10 or SAE 20 hydraulic oils.

Approved oils are: Esso Polar 32; Shell Tellus 29; Gulf Harmony 48AW or Dextron II transmission fluid or equal.

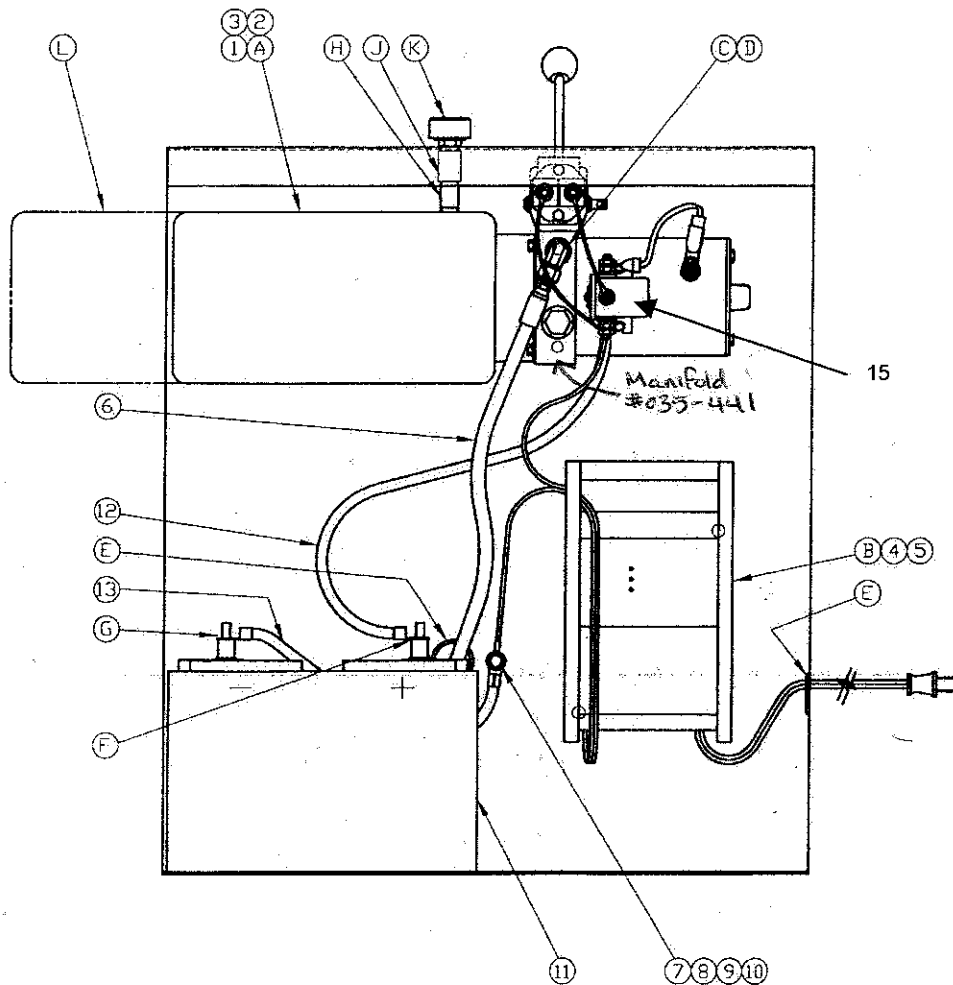
General Assembly



General Assembly Parts List

ITEM	QTY	PART NO.	DESCRIPTION
1	1	192-5002	Straddle assembly 1500lb capacity (right)
	1	192-5002-1	Straddle assembly 2000lb capacity (right)
	1	192-5002-1	Straddle assembly 2500lb capacity (right)
2	1	192-5003	Straddle assembly 1500lb capacity (left)
	1	192-5003-1	Straddle assembly 2000lb capacity (left)
	1	192-5003-1	Straddle assembly 2500lb capacity (left)
3	4	014-076	Set Screw
4	1	783-753-A	Brake Pad Assembly
5	2	020-018	Straddle Wheel c/w Bearings (Phenolic)
	2	104-000	Straddle Wheel c/w Bearings (Poly- Optional)
	2	100-103	Straddle Wheel c/w Bearings (Steel - Optional)
6	4	018-500	Straddle Wheel Bearing
7	2	799-944	Straddle Wheel Axle
8	2	020-551	Swivel Caster Assembly
9	2	020-018	Swivel Wheel c/w Bearings (Phenolic)
10	1	783-395-A	Brake Shaft Weldment
12	1	118-237-A	Brake Link Arm
13	1	783-986-A	Brake Handle Assembly
14	1	035-654	Knob
15	1	024-000	Lever
16	1	783-991-A	Cover
17	4	037-008	Rubber Grommet
20	1	038-073	Decal - Blue Giant Logo
21	1	106-048	Decal - Safety Instructions (Not Shown)
22	1	107-942	Decal - No Riding (Not Shown)
23	1	108-056	Decal - Up (Not Shown)
24	1	108-057	Decal - Down (Not Shown)
25	1	117-529	Decal - Hands Off Symbol (Not Shown)
26	1	038-037	Decal - Brake On/Off (Not Shown)

Electrical / Hydraulic Components



ITEM	QTY	PART NO.	DESCRIPTION	ITEM	QTY	PART NO.	DESCRIPTION
1	2	010-012	Hex Head Cap Screw	A	1	033-076	Power Pack Manual Lift/Lower-12V
2	2	012-252	Flat Washer	B	1	032-424	Charger - 12V
3	2	012-201	Helical Lock Washer	C	1	034-580	Adapter
4	2	010-149	Hex Head Cap Screw	D	1	034-511	90o Elbow
5	2	012-285	Internal Tooth Washer	E	2	037-008	Rubber Grommet
6	1	781-240	Hose Assembly	F	1	031-549	Positive Terminal Cover - Red
7	1	010-137	Hex Head Cap Screw	G	1	031-550	Negative Terminal Cover - Black
8	1	012-210	Flat Washer	H	1	035-060	Nipple
9	1	012-200	Helical Lock Washer	J	1	035-018	Pipe Coupling
10	1	011-502	Hex Nut	K	1	035-231	Breather
11	1	031-533	Battery	L	1	033-763	Reservoir - 3 Gal.
12	1	783-316	Cable Assembly - 24"	# 035-441 Manifold			
13	1	783-429	Cable Assembly - 15"				
14	1	See Chart	Pick Kit				
15	1	025-779	Solenoid				

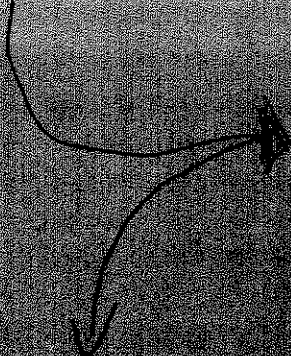
old (1991
1992)

P. Stackens

Part of the
Power Pack

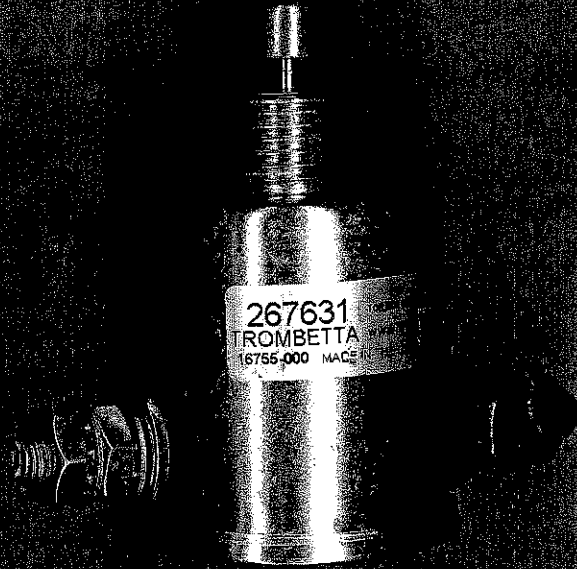
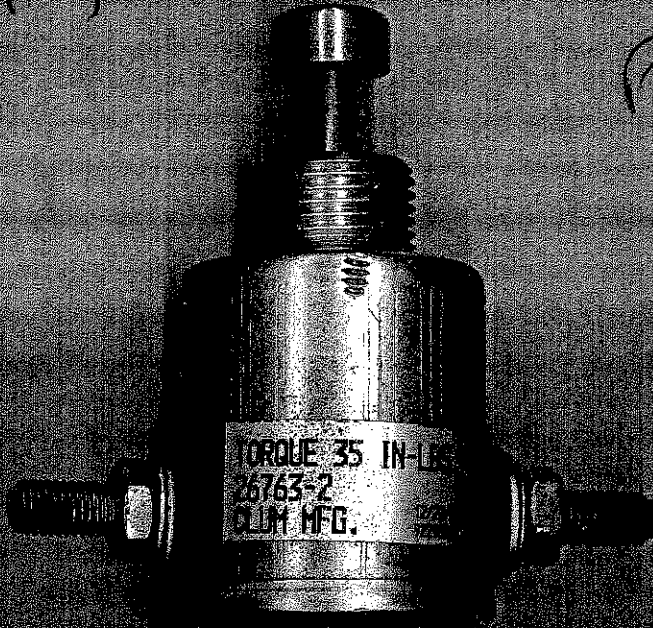
033-076

#



Use

New



RECOMMENDED SPARE PARTS

QTY	PART NUMBER	DESCRIPTION
2	104-000	Load /Straddle Wheel
4	018-500	Load Wheel Bearings
2	799-944	Straddle Axle
2	020-551	Swivel Casters w/Axle
1	025-780	Solenoid Switch (P Series Only)

To Order Parts

For prompt service when ordering parts, please provide the following information to your local distributor.

1. Model and Serial number of the equipment.
2. Part number, description and quantity
3. Shipping instructions

When in doubt as to part required, please provide a sketch or the used part as a sample.

Record Here For Future Reference

Model Number: _____

Serial Number: _____

Distributor: _____

_____**BLUE GIANT EQUIPMENT CORPORATION**

85 Heart Lake Road South
Brampton, ON L6W 3K2
Tel: 800 668 7078 / 905 457 3900
Fax: 888 378 5781 / 905 450 6555
www.BlueGiant.com